

KU LNA BB 0011000 A[A;B]



Manual

Directors: Ian Duke/Gustav Wenhold
Reg no: HRB 3350 Hof, VAT-ID-No: DE 813343044, WEEEReg.-Nr. DE34186665

Kuhne electronic GmbH
Scheibenacker 3, 95180 Berg
Germany

A DIVISION OF

ALARIS
THE RF TECHNOLOGY GROUP



Specification

Type	KU LNA BB 0011000 A [A;B]	
Frequency range	0.01 ... 10 GHz	
Noise figure @ 18 °C	(0.1 ... 0.2 GHz)	max. 6 dB, typ. 3 dB
	(0.2 ... 10 GHz)	max. 4.5 dB, typ. 2.3 dB
Gain	(0.01 ... 8 GHz)	typ. 24 dB
	(8 ... 10 GHz)	typ. 22 dB
Gain Flatness	(0.01 ... 8 GHz)	±1 dB
	(8 ... 10 GHz)	±2.5 dB

Output power

Output power P1dB	min. 15 dBm, typ. 18 dBm
Output IP3	min. 30 dBm, typ. 32 dBm

S-Parameter

Input return loss (S11)	max. -5 dB, typ. -10 dB
Output return loss (S22)	max. -7 dB, typ. -10 dB
	(0.1 ... 0.1 GHz)
	(0.1 ... 10 GHz)

Operating parameters

Supply voltage	+6 ... 36 V DC
Current consumption @ 12 V	typ. 85 mA

Mechanics

Input connector / impedance	SMA-female, 50 ohms
Output connector / impedance	SMA-female, 50 ohms
DC connector	Solder Pin
Case	milled brass
Dimensions (mm)	58 x 45 x 12
Weight	typ. 200 g

Absolute ratings

Maximum RF input power	+15 dBm
DC voltage	+38 V
Operating temperature range	-30 ... +85 °C

Notice

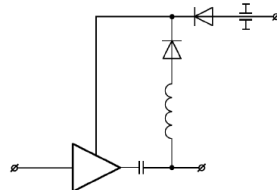
- Additional protection against moisture is essential in case of outdoor installation.
- 2 bias configurations available: Bias on RF input and output or RF output only.
- Single stage version available (14 dB gain, KU LNA BB 0011000 B)
- Typ. 0.3 dB higher noise figure at variant with input bias-tee

Applications:

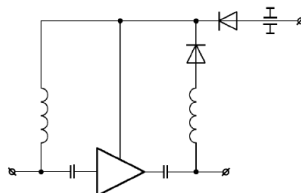
- Test and Measurement
- Analog & digital transmission systems

Features:

- Wideband, low noise figure
- Excellent gain flatness up to 8 GHz
- Flexible bias options:
- Variant AA: supply via solder pin or RF output



- Variant AB: supply via solder pin or RF output, additional bias-tee at RF input



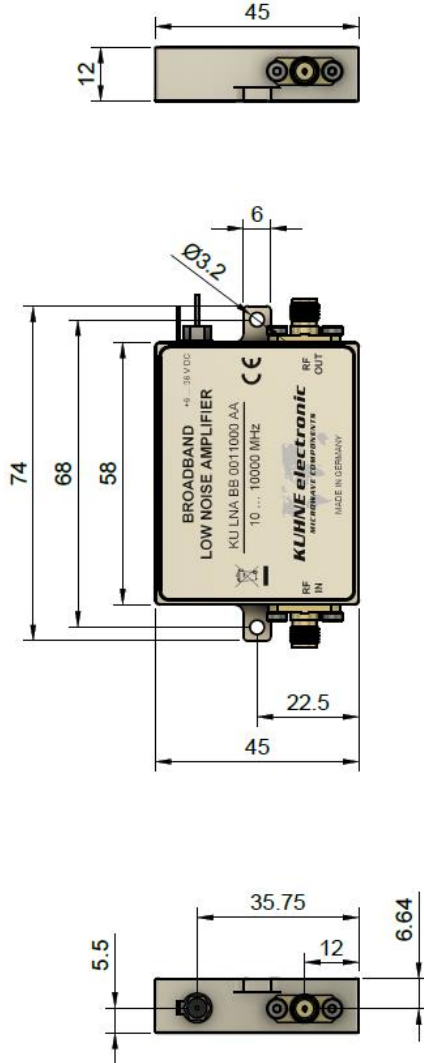
CE Conformity

EMC directive 2014/30/EU
 Low voltage directive 2014/35/EU
 RoHS directive 2011/65/EU





Dimensions



Typical Curves (DC = 12 V, DC current = 85 mA)

